

Eyles Road, Tidworth, SP9

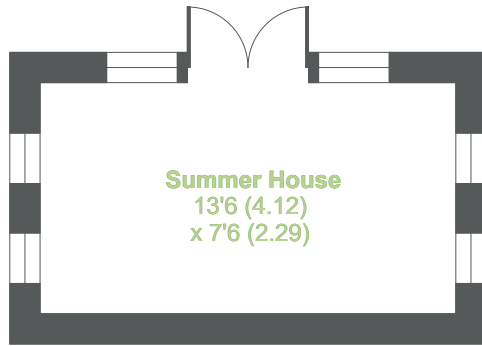
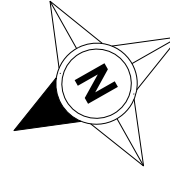
Approximate Area = 960 sq ft / 89.1 sq m

Garage = 199 sq ft / 18.4 sq m

Outbuilding = 102 sq ft / 9.4 sq m

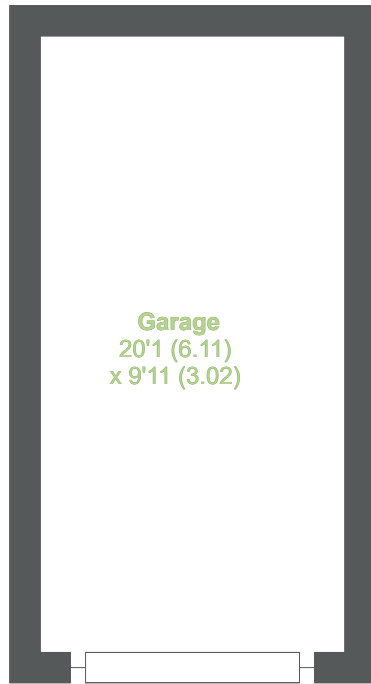
Total = 1261 sq ft / 116.9 sq m

For identification only - Not to scale



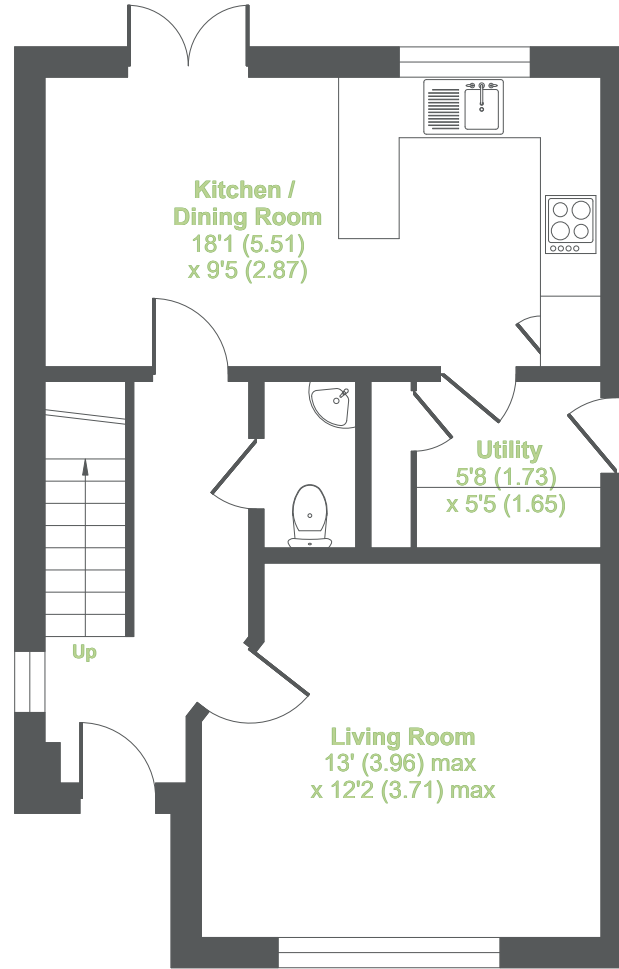
Summer House
13'6 (4.12)
x 7'6 (2.29)

OUTBUILDING



Garage
20'1 (6.11)
x 9'11 (3.02)

GARAGE

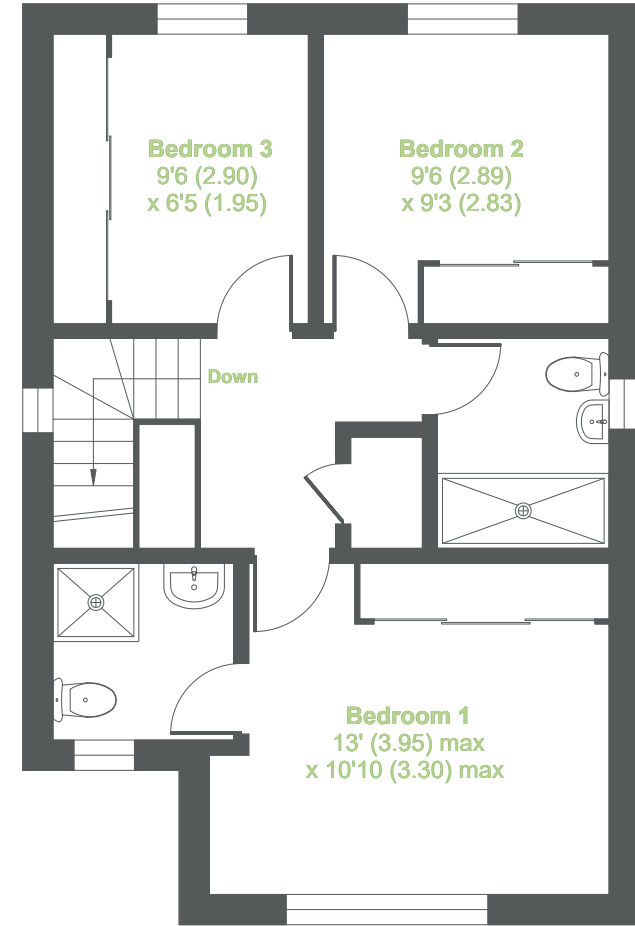


Kitchen / Dining Room
18'1 (5.51)
x 9'5 (2.87)

Utility
5'8 (1.73)
x 5'5 (1.65)

Living Room
13' (3.96) max
x 12'2 (3.71) max

GROUND FLOOR



Bedroom 3
9'6 (2.90)
x 6'5 (1.95)

Bedroom 2
9'6 (2.89)
x 9'3 (2.83)

Bedroom 1
13' (3.95) max
x 10'10 (3.30) max

FIRST FLOOR



Floor plan produced in accordance with RICS Property Measurement 2nd Edition, Incorporating International Property Measurement Standards (IPMS2 Residential). © nitchecom 2026. Produced for Brockenhurst Estate Agents. REF: 1431301

